



Biological Aspects of Mycophagous Thrips *Elaphrothrips procer* (Schmutz) (Thysanoptera: Phlaeothripidae)

S. M. Nagrale

Zoology Department, Shri R.L.T.College of Science, Akola (M.S.).

Email: sushimnagrale_1111@rediffmail.com

Abstract

Thrips shows some remarkable structural peculiarities in their behaviour and life history which unobserved among the other insects. In most species of mycophagous thrips fertilization of the eggs is by means of bisexual union. *Elaphrothrips procer* (Schmutz) express specific biological aspects of life history and developmental stages. This paper represents some biological aspects of reproductive biology and developmental stages of mycophagous thrips *Elaphrothrips procer* (Schmutz).

Key words: *Elaphrothrips procer*, developmental stages, mycophagous thrips.

Introduction:

Insect Thrips shows wide range of distribution and ecological habitat. They occur on the tender, succulent parts of the plants, under the barks of dead and drying twigs, among decaying leaves of grass, feeding on fungus spores and hypae. They are phytophagous predators and mycophagous.

The studied insect Thrips, *Elaphrothrips procer* (Schmutz) is a mycophagous thrips and feeds on fungal spores and generally occurs on the fungus infected dry leaves of *Butea monosperma* plant during humid seasons of the year. They are found within the curved folds of fungal infected dry leaves of the said plant.

Materials And Methods:

Collection and rearing of thrips:

The thrips were collected from their host plant *Butea monosperma* dry fungal infected leaf during the humid periods of the year when they mostly occur. For collection of these species the methods of Ananthakrishnan (1969) was followed

The collected specimens of *Elaphrothrips procer* (Schmutz), adult male, female, larvae and eggs were kept in large plastic bowls along with fungus infected dry leaves. Then they transfer to the separate plastic rearing bowl to avoid overcrowding and food limitation. The newly hatched larvae were regularly fed on fungus infected dry leaves of *Butea monosperma*. For protection bowls were covered by muslin cloth. Light 12:12 and temperature (25±10°C) were maintained. Relative humidity maintained at 80% by keeping wet filter paper in the rearing bowl, some time wet cotton plug also used.

Field Observation and photo-micrograph:

For field photography and documentation, images were captured directly by using Olympus digital camera (SP-550UZ). Photographs of adults, eggs, larvae, prepupa and pupa were capture and photographs of matting behaviour were also imaged.

Results And Discussion:

Biological aspects:

Oviposition behaviour.



the egg laying pattern and the number of eggs and vary considerably, it depending upon the aggregation patterns and sub-social behaviour of the diapa.

The host specificity of *Elaphostigma procer* (Schmitz) are not specified, but the host *Datura metoogera* from where the insects collected, the female lays eggs in the leaf folds of *Datura metoogera* dry fungus infested leaves. The eggs are protected from direct exposure of sunlight.

The female lays eggs in the range of 10-15 in a group and each egg is vertically glued to the leaf. The oviposition period lasts for 2 to 4 days. On an average each female lays about 30-40 eggs.

Duration of developmental stages.

The time taken by an embryo to hatch into larva varies from 1-2 days in ovoviviparous eggs and in oviparous eggs 6-8 days. The embryo hatches into larva I.

It is observed that the larvae emerged from the viviparous female appears larger than oviparous or ovoviviparous female.

The larva I feeds actively for 4-6 days and then changes or moults to larva II. At the time of moulting the larva show movement which causes ruptures of the cuticle along the dorsal side. Through the gap the larva II comes out.

The larval II, feeding for 5-7 days with continues its life and after proper growth, they moults to prepupa. The larval exuviae are grey in colour. In an average total larval period is about 10-15 days.

The prepupa life is very short, only 1 to 2 days. Then it changes into the pupa I. The Pupa I. The life duration of pupal stage of the pupa I is also short being 1 to 3 days and it moults to pupa II.

The pupa II moults into the adult stage and moults in the adult. During the pupa II stages the pupa undergoes metamorphic changes and adult moults. During pupation it gives out pupal exuviae which are then whitish in colour with the posteriorly grey in coloured. A total pupal period is 4-9 days.

Just after emergence the adults start mating and female starts laying egg within 6-9 days depending upon the climate conditions and food availability.

Life History:

The life history of *Elaphostigma procer* (Schmitz) started from egg with two active larva, prepupa followed by pupa I, pupa II and completed into adult. The eggs are glued vertically and occur in masses, shell which is white. In the prepupa, pupa I and pupa II are not in colour. While adults are black in colour.

The larvae resembled in many respects to adults. The larvae are very active. They feed on the fungal spores as adult do. The larval molts are followed by a prepupa occurring in between the larva II and pupa I. There are two pupal stages, the pupa I and pupa II. The pupa are inactive quiescent and are non-feeding.

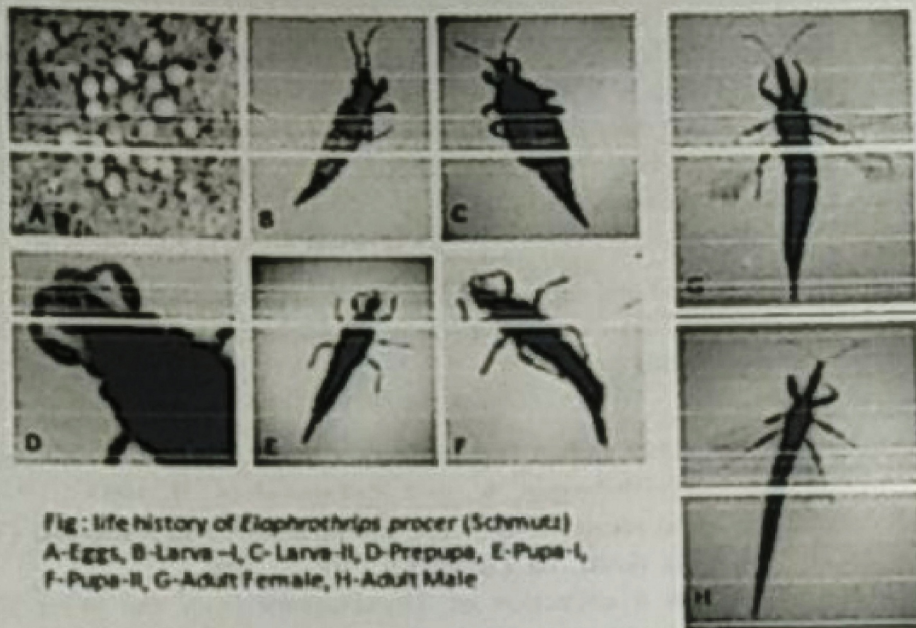


Fig: life history of *Elaphrothrips procer* (Schmutz)
 A-Eggs, B-Larva-I, C-Larva-II, D-Prepupa, E-Pupa-I,
 F-Pupa-II, G-Adult Female, H-Adult Male

In the life history of *Elaphrothrips procer* (Schmutz) the prepupal stage has been lie in between the larva II and pupa I. Therefore, the following terminology is used in *Elaphrothrips procer* (Schmutz) i.e. first stage larva I, second larva II, prepupa, pupa I and pupa II. This terminology is similar with the study on *Elaphrothrips greeni* (Wataue, 1985)

Eggs of many thrips are usually whitish in colour, in *Elaphrothrips procer* the eggs are whitish initially and then become brownish with a paired red spots (Sharga, 1933). Even in other thrips the eggs are whitish, pinkish yellow or dark coloured (Ananthakrishnan et al., 1983; Kumm, 2002). In *Elaphrothrips procer* (Schmutz) the eggs are initially dull white and later on change white to pink colour.

In *Elaphrothrips procer* (Schmutz) the eggs are initially dull white and later on change white to pink colour which support and agree with the above record. *Elaphrothrips procer* (Schmutz) females in a colony lay their eggs in cluster. When they form aggregations, the oedymorous male guard and protect the colony and egg mass by both, thus tend to exhibit division of labour. It also observed that *Elaphrothrips brevicornis*, a West Indian species, sits over her eggs after laying them on the leaves and protects the eggs from the predators (Bagnall, 1915).

The rate of developmental stages further determines the total period of life cycle. Ecological conditions temperature humidity greatly influence the period of life-cycle of thrips. Therefore it is not advisable to correlate the life-cycle of the species reared in cold and warm climate. The entire post-embryonic development, from hatching to the adult condition is completed in 30-35 days in *Limothrips cerealium* (Sharga, 1933), while in all days in *Frankliniella tritici* (Watts, 1936) and the second larval stages in all thrips so far studied (Lewis, 1973).

In the life-history of the thrips it is common that the life-span of the first larva is always shorter than that of the second one. In *Elaphrothrips greeni* total period of post-embryonic



development varies between 13.5 to 23.5 days and also the sexual larval stage is longest (4-0 days) and the pre-pupal stage the shortest (1-1.5 days). (Watane, 1985).

Pupa I has a life of one days and pupa II 2-3 days in *Trichionthrips breviceps* (Seshadri, 1953), pupa I, 1.4 days and pupa II 3.7 days in *Haplothrips niger* (Loan and Holdaway, 1955), Pupa I, 2-3 days and pupa II 5-7 days in *Bagnalliella yuccae* (Derbeneva, 1959) and pupa I, one days pupa II 2.8 days in *Haplothrips aculeatus* (Koppa, 1970) pupa, I-2.5 and pupa II, 2.5-3.5 days in *Elaphrothrips greeni* (Watane, 1985).

Acknowledgement:

I would like to thanks to my supervisor Dr. LA Raja, Associate Professor and Head, Department of Zoology, Sri Sarvajit College of Arts, Commerce and Science, for his guidance and for preparation of this paper.

Literature Cited:

1. Anathakrishnan, T.N. 1969. Indian Thysanoptera. CSIR Zoological Monograph No.1.
2. Anathakrishnan, T.N., Dhilimon, K. and Padmanabhan, R. 1983. Reproductive strategies and behavioural attributes in some sporophagous Idolothripinae (Tubulifera: Thysanoptera). Proc. India. Acad. Sci. (Anim.Sci.). 92: 95-108
3. Bagnall, R.S. 1915. On a collection of Thysanoptera from the West Indies with descriptions of new genera and species. J. Linn. Soc. Zool. 32: 495-507.
4. Bailey, S.P. 1933. The biology of the ocean thrips, *Hugalia* 1: 401-522.
5. Derbeneva, N.N. 1959. Life-cycle of *Haplothrips yuccae* Sav. Ent. Obozr. 36: 64-81.
6. Koppa, P. 1970. Studies on thrips (Thysanoptera) species most commonly occurring on cereals in Finland. Ann. Agric. Fenn. 9: 191-265.
7. Kumm, S. 2002. Reproduction, progenesis, and embryogenesis of thrips (Thysanoptera, Insecta), Developmental Biology, University of Halle-Wittenberg, Halle.
8. Lewis, T. 1973. Thrips their biology, ecology, and economic importance. Academic press, New York .
9. Loan, C. and Holdaway, F.G. 1955. Biology of the red clover thrips, *Haplothrips niger* (Osborn). Can. Ent. 97: 210-210.
10. Pelikan, J. 1951. On carnation thrips *Taeniothrips dianthi* Pr. (in Czech). Ent. Listy 14 : 5-38.
11. Seshadri, A.R. 1953. Observations on *Trichionthrips breviceps* (Bagnall), a little known predatory thrips from South Indian. Indian J. agric. Sci. 23: 27-39.
12. Sharga, U.S. 1933. Biology and life-history of *Limothrips cereatum* and *Aptinothrips rufus* feeding on Gramineae. Ann. Appl. Biol. 20: 308-326.
13. Watane, P.S. 1985. Studies on Thrips Fauna in Vidarbha Region and Structure and Development of thrips *Elaphrothrips greeni* (Bagnall) (Thysanoptera- Phlaeothripidae).
14. Watts, J.G. 1936. A study of the biology of the flower thrips *Frankipiella tritic* (Fitch) with special reference to cotton. Bull. S. Carol. Agric. Exp. Stn. 3061-46